



LORO-DRAINLET® **roof drains, made of stainless** **steel, with gravity flow,** **Series 84** **DN 50 - DN 125**

- as **main drain**
 - as **emergency drain**
- with clamping flange, for bituminous and plastic roofing sheets**

LORO-DRAINLET® flat roof drains comply with DIN EN 1253. They constitute fluidically optimized roof drains with a higher discharge rate, improved flow properties, smaller installation dimensions and a better acoustic behaviour. With a discharge rate of up to 10 l/s, they belong to the drains with the highest discharge capacity.

In combination with LORO-DRAINLET® emergency drains and a varied pipe and fitting programme, these drains form a complete roof drainage system that meets the highest requirements. The usage of LORO-DRAINLET® emergency drains is mandatory according to DIN 1986-100 when installing drainage systems with gravity flow.

Special advantages:

- high discharge rate
- easy installation
- increased corrosion protection
- UV-resistant
- small cut-outs
- light weight
- drainage option during the construction phase
- LORO-DRAINLET® emergency drains are installed at the same level as the main drainage systems



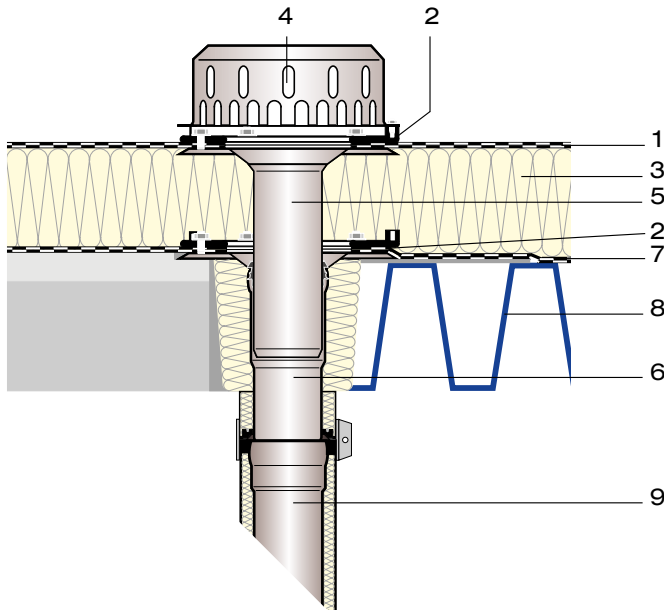
LORO-DRAINLET®
flat roof drains,
DN 50 - DN 125



LORO-DRAINLET®
flat roof drains
as emergency drain,
DN 50 - DN 100

Examples of Application

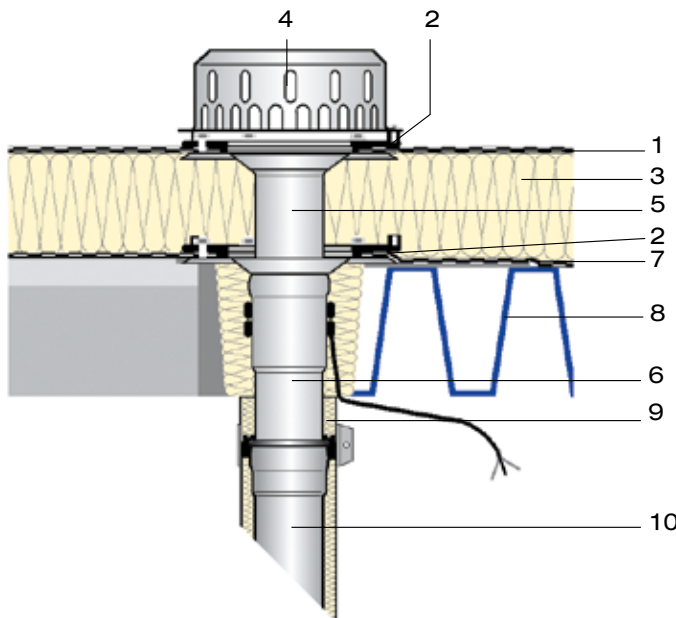
LORO-DRAINLET® flat roof drain, in concrete/trapezoidal sheet metal roof, insulated



- 1 Roofing sheet
- 2 Compression seal*
- 3 Thermal insulation
- 4 LORO-DRAINLET® strainer basket
- 5 LORO-DRAINLET® drain body with loose flange
- 6 LORO-DRAINLET® bottom part with loose flange and thermal insulation
- 7 Vapor barrier
- 8 Concrete roof or trapezoidal sheet metal roof
- 9 LORO-X steel discharge pipe

* Can be omitted when bituminous roofing sheets are used.

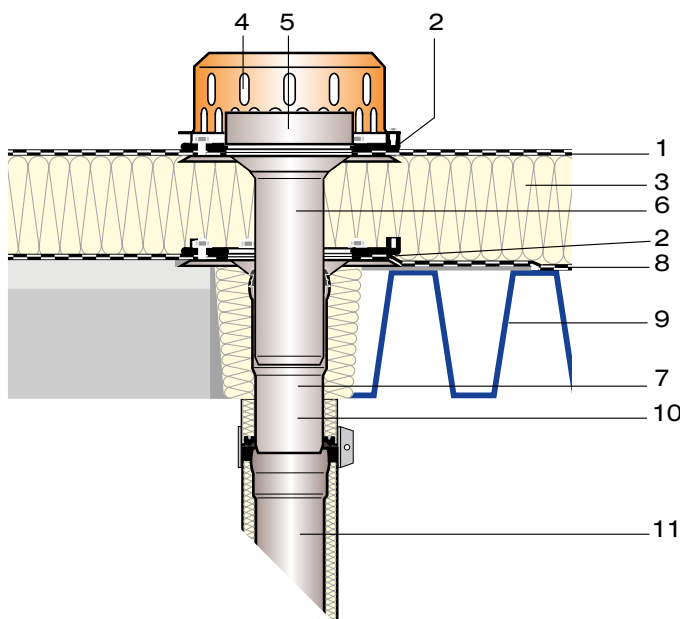
LORO-DRAINLET® flat roof drain, in concrete/trapezoidal sheet metal roof, insulated



- 1 Roofing sheet
- 2 Compression seal*
- 3 Thermal insulation
- 4 LORO-DRAINLET® strainer basket
- 5 LORO-DRAINLET® drain body with loose flange
- 6 LORO-DRAINLET® bottom part with loose flange, thermal insulation and heating
- 7 Vapor barrier
- 8 Concrete roof or trapezoidal sheet metal roof
- 9 Composite pipe insulation piece
- 10 LORO composite pipe

* Can be omitted when bituminous roofing sheets are used.

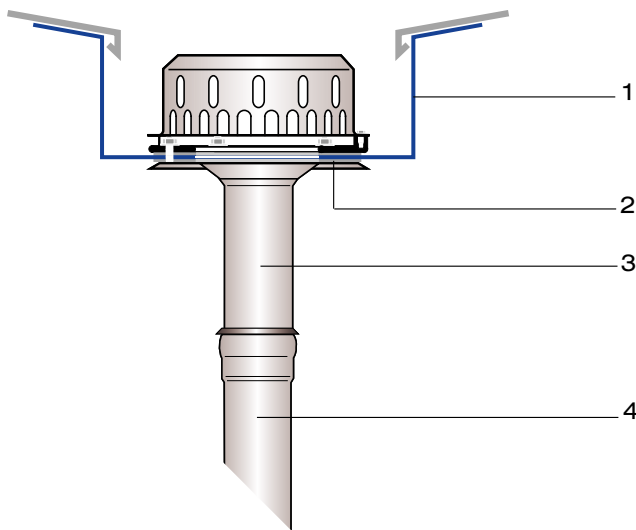
LORO-DRAINLET® flat roof drain, in concrete/trapezoidal sheet metal roof, insulated



- 1 Roofing sheet
- 2 Compression seal*
- 3 Thermal insulation
- 4 LORO-DRAINLET® emergency drain strainer basket
- 5 LORO-DRAINLET® loose flange with congestion element
- 6 LORO-DRAINLET® drain body
- 7 LORO-DRAINLET® bottom part with loose flange and thermal insulation
- 8 Vapor barrier
- 9 Concrete roof or trapezoidal sheet metal roof
- 10 Composite pipe insulation piece
- 11 LORO composite pipe

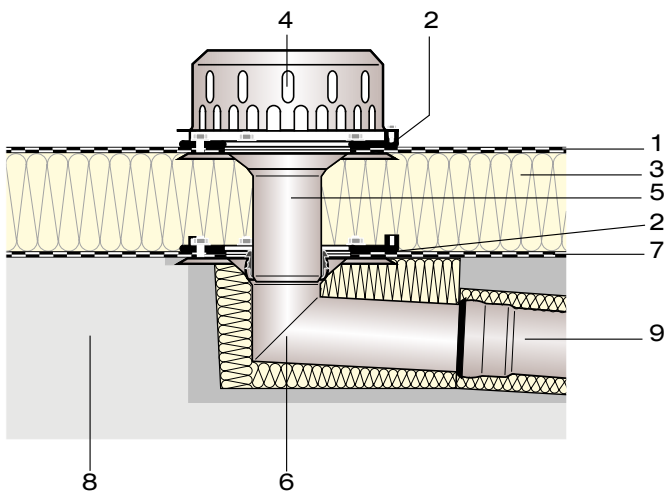
* Can be omitted when bituminous roofing sheets are used.

Examples of Application



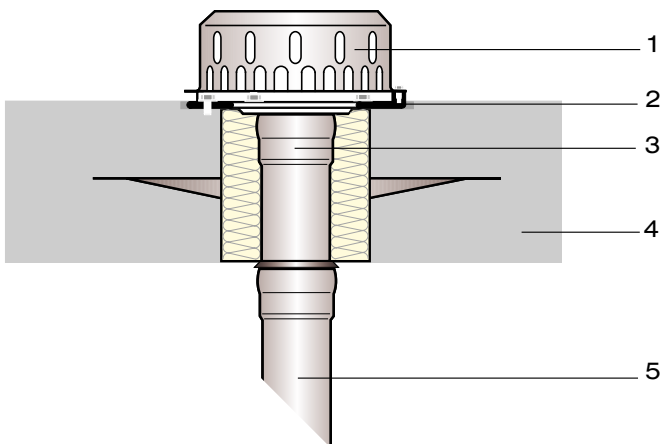
LORO-DRAINLET® flat roof drain, in non-insulated box gutter

- 1 Box gutter
- 2 Compression seal
- 3 LORO-DRAINLET® drain body
- 4 LORO-X steel discharge pipe



LORO-DRAINLET® flat roof drain, in concrete roof, insulated

- 1 Roofing sheet
- 2 Compression seal*
- 3 Thermal insulation
- 4 LORO-DRAINLET® strainer basket
- 5 LORO-DRAINLET® drain body with loose flange
- 6 LORO-DRAINLET® bottom part with loose flange and thermal insulation
- 7 Vapor barrier
- 8 Concrete roof
- 9 LORO composite pipe



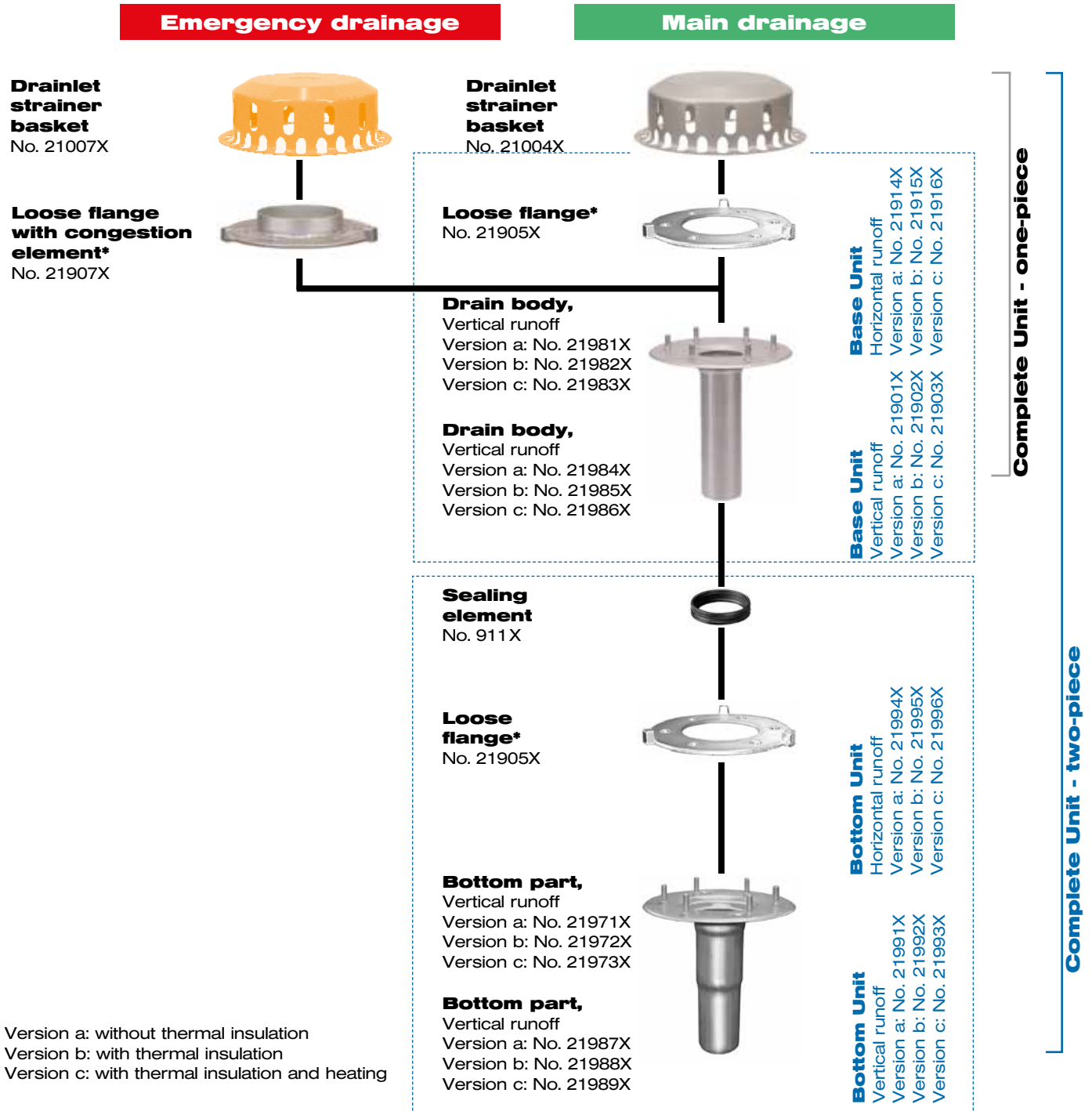
LORO flat roof drain, in concrete roof made of waterproof concrete, as special production

- 1 LORO-DRAINLET® strainer basket
- 2 Loose flange
- 3 LORO drain body with blocking flange
- 4 Concrete roof
- 5 LORO-X steel discharge pipe

Setup diagramm/system components

LORO-DRAINLET[®]

DL flat roof drains/flat roof emergency drains
with clamping flange, for flat roof drainage with gravity flow,
Series 84, made of stainless steel,
DN 50, DN 70, DN 100 and DN 125

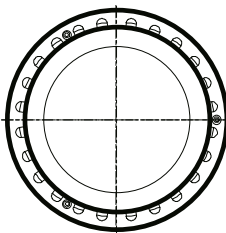
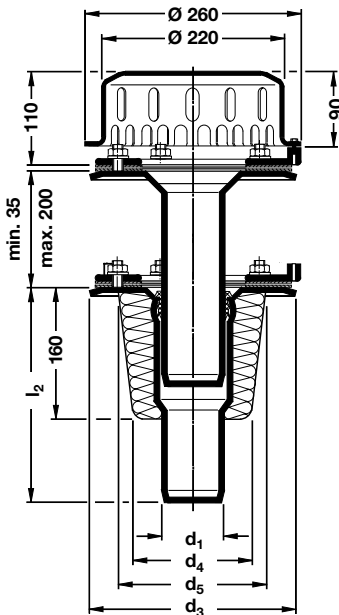
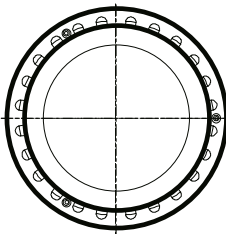
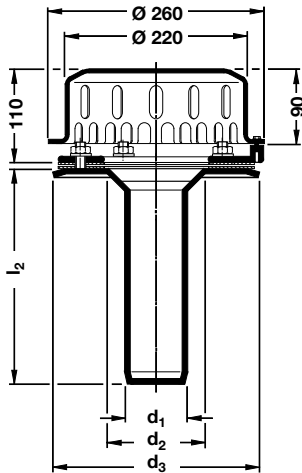


Version a: without thermal insulation
 Version b: with thermal insulation
 Version c: with thermal insulation and heating

* Including compression seal of perbunan, can be omitted when bituminous roofing sheets are used.

Dimensions and Weights
LORO-DRAINLET® DL flat roof drains,
DN 70 - DN 125, with clamping flange,
made of stainless steel,
according to DIN EN 1253, Series 84
Discharge rate according to
specification sheet:

- LX1384 DN 50 = 5,4 l/s***
- LX 846 DN 70 = 6,3 l/s***
- LX 873 DN 100 = 6,5 l/s***
- LX 874 DN 125 = 9,8 l/s***



Complete Units, one-piece

Version a (without thermal insulation)

- DN 50: Art.-No. 21511.050X Weight: 2,3 kg
- DN 70: Art.-No. 21511.070X Weight: 2,6 kg
- DN 100: Art.-No. 21511.100X Weight: 3,8 kg
- DN 125: Art.-No. 21511.125X Weight: 4,9 kg

consisting of:

- drain body, compression seal**, loose flange,
- Drainlet strainer basket

Version b (with thermal insulation)

- DN 50: Art.-No. 21512.050X Weight: 2,4 kg
- DN 70: Art.-No. 21512.070X Weight: 2,6 kg
- DN 100: Art.-No. 21512.100X Weight: 3,9 kg
- DN 125: Art.-No. 21512.125X Weight: 5,3 kg

consisting of:

- drain body with thermal insulation, compression seal**,
- loose flange, Drainlet strainer basket

Version c (with thermal insulation and heating)

- DN 50: Art.-No. 21513.050X Weight: 2,6 kg
- DN 70: Art.-No. 21513.070X Weight: 2,7 kg
- DN 100: Art.-No. 21513.100X Weight: 4,0 kg
- DN 125: Art.-No. 21513.125X Weight: 5,3 kg

consisting of:

- drain body with thermal insulation and heating,
- compression seal**, loose flange, Drainlet strainer basket

Complete Units, two-piece

Version a (without thermal insulation)

- DN 50: Art.-No. 21521.050X Weight: 3,5 kg
- DN 70: Art.-No. 21521.070X Weight: 4,4 kg
- DN 100: Art.-No. 21521.100X Weight: 6,3 kg
- DN 125: Art.-No. 21521.125X Weight: 9,2 kg

consisting of:

- drain body, compression seal**, loose flange,
- Drainlet strainer basket, bottom part, compression seal**,
- loose flange, sealing element

Version b (with thermal insulation)

- DN 50: Art.-No. 21522.050X Weight: 3,6 kg
- DN 70: Art.-No. 21522.070X Weight: 4,5 kg
- DN 100: Art.-No. 21522.100X Weight: 6,4 kg
- DN 125: Art.-No. 21522.125X Weight: 9,8 kg

consisting of:

- drain body, compression seal**, loose flange,
- Drainlet strainer basket, bottom part with thermal insulation,
- compression seal**, loose flange, sealing element

Version c (with thermal insulation and heating)

- DN 50: Art.-No. 21523.050X weight: 3,8 kg
- DN 70: Art.-No. 21523.070X weight: 4,6 kg
- DN 100: Art.-No. 21523.100X weight: 6,5 kg
- DN 125: Art.-No. 21523.125X weight: 9,8 kg

consisting of:

- drain body, compression seal**, loose flange, Drainlet strainer
- basket, bottom part with thermal insulation and heating,
- compression seal**, loose flange, sealing element

DN	d ₁	d ₂	d ₃	d ₄	d ₅	l ₂
50	53	125	245	130	150	260
70	73	125	245	130	150	260
100	102	145	300	160	190	270
125	133	175	330	190	220	280

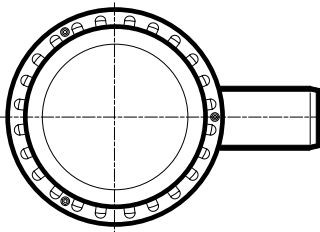
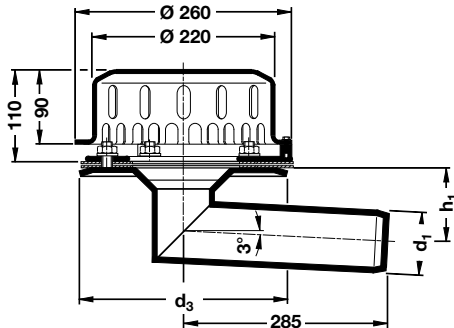
* In compliance with test specification according to DIN EN 1253

** Can be omitted when bituminous roofing sheets are used.

Dimensions and Weights

LORO-DRAINLET® DL flat roof drains, DN 70 - DN 125, with clamping flange, made of stainless steel, according to DIN EN 1253, Series 84 Discharge rate according to specification sheet:

LX 888 DN 70 = 5.6 l/sec*
LX 855 DN 100 = 6.1 l/sec*
LX 890 DN 125 = 9.2 l/sec*



Complete Units, one-piece

Version a (without thermal insulation)

DN 70: Art-No. 21514.070X weight: 2.7 kg
 DN 100: Art-No. 21514.100X weight: 4.1 kg
 DN 125: Art-No. 21514.125X weight: 5.2 kg

consisting of:

drain body, compression seal**, loose flange, Drainlet strainer basket

Version b (with thermal insulation)

DN 70: Art-No. 21515.070X weight: 2.8 kg
 DN 100: Art-No. 21515.100X weight: 4.3 kg
 DN 125: Art-No. 21515.125X weight: 5.4 kg

consisting of:

drain body with thermal insulation, compression seal**, loose flange, Drainlet strainer basket

Version c (with thermal insulation and heating)

DN 70: Art-No. 21516.070X weight: 3.2 kg
 DN 100: Art-No. 21516.100X weight: 4.7 kg
 DN 125: Art-No. 21516.125X weight: 5.9 kg

consisting of:

drain body with thermal insulation and heating, compression seal**, loose flange, Drainlet strainer basket

Complete Units, two-piece

Version a (without thermal insulation)

DN 70: Art-No. 21524.070X weight: 4.1 kg
 DN 100: Art-No. 21524.100X weight: 6.7 kg
 DN 125: Art-No. 21524.125X weight: 9.4 kg

consisting of:

drain body, compression seal**, loose flange, Drainlet strainer basket, bottom part, compression seal**, loose flange, sealing element

Version b (with thermal insulation)

DN 70: Art-No. 21525.070X weight: 4.7 kg
 DN 100: Art-No. 21525.100X weight: 7.3 kg
 DN 125: Art-No. 21525.125X weight: 9.1 kg

consisting of:

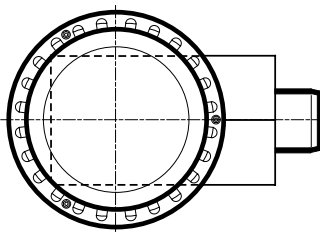
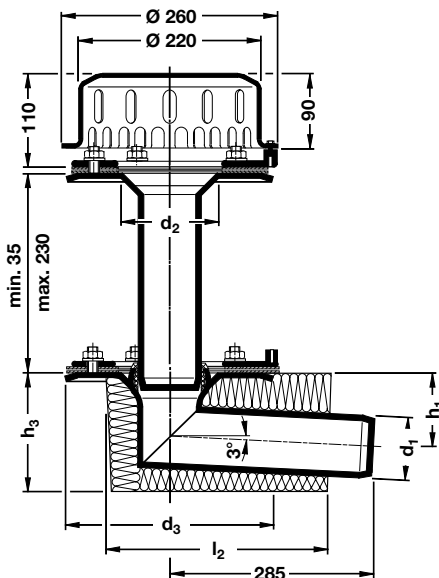
drain body, compression seal**, loose flange, Drainlet strainer basket, bottom part with thermal insulation, compression seal**, loose flange, sealing element

Version c (with thermal insulation and heating)

DN 70: Art-No. 21526.070X weight: 5.2 kg
 DN 100: Art-No. 21526.100X weight: 8.1 kg
 DN 125: Art-No. 21526.125X weight: 10.5 kg

consisting of:

drain body, compression seal**, loose flange, Drainlet strainer basket, bottom part with thermal insulation and heating, compression seal**, loose flange, sealing element



DN	d ₁	d ₂	d ₃	h ₁	h ₃	l ₂
70	73	125	245	80	137	260
100	102	145	300	103	174	270
125	133	175	330	121	200	280

* In compliance with test specification according to DIN EN 1253

** Can be omitted when bituminous roofing sheets are used.

Dimensions and Weights

LORO-DRAINLET® DL flat roof drains, as emergency drains, Series 84 DN 70 - DN 100, with clamping flange, made of stainless steel, according to DIN EN 1253 Discharge rate according to specification sheet:

- LX1385 DN 50 = 7,5 l/sec***
- LX 848 DN 70 = 9.0 l/sec***
- LX 875 DN 100 = 9.0 l/sec***

Complete Units, one-piece

Version a (without thermal insulation)

- DN 50: [Art-No. 21711.050X](#) weight: 1.4 kg
- DN 70: [Art-No. 21711.070X](#) weight: 2.7 kg
- DN 100: [Art-No. 21711.100X](#) weight: 3.9 kg

consisting of:

drain body, compression seal**, loose flange with congestion element, Drainlet strainer basket

Version b (with thermal insulation)

- DN 50: [Art-No. 21712.050X](#) weight: 2.5 kg
- DN 70: [Art-No. 21712.070X](#) weight: 2.6 kg
- DN 100: [Art-No. 21712.100X](#) weight: 3.9 kg

consisting of:

drain body with thermal insulation, compression seal**, loose flange with congestion element, Drainlet strainer basket

Version c (with thermal insulation and heating)

- DN 50: [Art-No. 21713.050X](#) weight: 2.7 kg
- DN 70: [Art-No. 21713.070X](#) weight: 2.7 kg
- DN 100: [Art-No. 21713.100X](#) weight: 4.1 kg

consisting of:

drain body with thermal insulation and heating, compression seal**, loose flange with congestion element, Drainlet strainer basket

Complete Units, two-piece

Version a (without thermal insulation)

- DN 50: [Art-No. 21721.050X](#) weight: 4.1 kg
- DN 70: [Art-No. 21721.070X](#) weight: 4.5 kg
- DN 100: [Art-No. 21721.100X](#) weight: 7.1 kg

consisting of:

drain body, compression seal**, loose flange with congestion element, Drainlet strainer basket, bottom part, compression seal**, loose flange, sealing element

Version b (with thermal insulation)

- DN 50: [Art-No. 21722.050X](#) weight: 4.2 kg
- DN 70: [Art-No. 21722.070X](#) weight: 4.5 kg
- DN 100: [Art-No. 21722.100X](#) weight: 7.1 kg

consisting of:

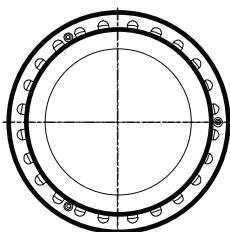
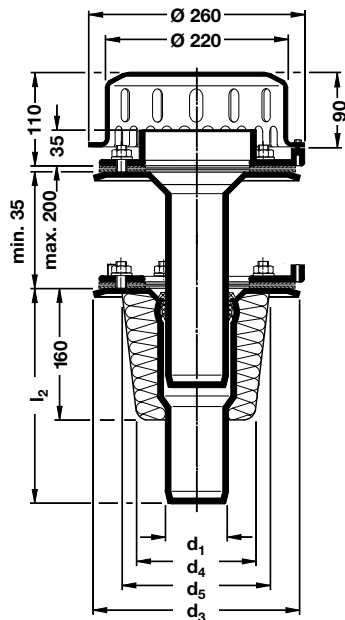
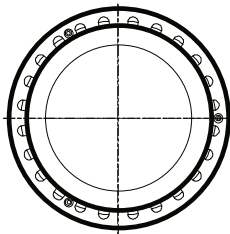
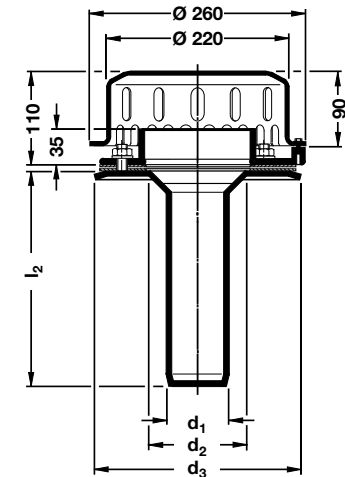
drain body, compression seal**, loose flange with congestion element, Drainlet strainer basket, bottom part with thermal insulation, compression seal**, loose flange, sealing element

Version c (with thermal insulation and heating)

- DN 50: [Art-No. 21723.050X](#) weight: 4.7 kg
- DN 70: [Art-No. 21723.070X](#) weight: 4.7 kg
- DN 100: [Art-No. 21723.100X](#) weight: 7.3 kg

consisting of:

drain body, compression seal**, loose flange with congestion element, Drainlet strainer basket, bottom part with thermal insulation and heating, compression seal**, loose flange, sealing element



DN	d ₁	d ₂	d ₃	d ₄	d ₅	l ₂
50	53	125	245	130	150	260
70	73	125	245	130	150	260
100	102	145	300	160	190	270

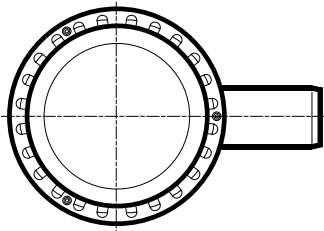
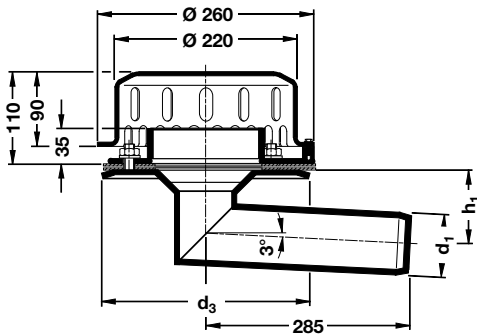
* In compliance with test specification according to DIN EN 1253

** Can be omitted when bituminous roofing sheets are used.

Dimensions and Weights

LORO-DRAINLET® DL flat roof drains, as emergency drains, Series 84 DN 70 - DN 100, with clamping flange, made of stainless steel, according to DIN EN 1253 Discharge rate according to specification sheet:

LX 889 DN 70 = 10.0 l/sec*
LX 854 DN 100 = 11.0 l/sec*



Complete Units, one-piece

Version a (without thermal insulation)

DN 70: Art-No. 21714.070X weight: 2.9 kg

DN 100: Art-No. 21714.100X weight: 4.4 kg

consisting of:

drain body, compression seal**, loose flange with congestion element, Drainlet strainer basket

Version b (with thermal insulation)

DN 70: Art-No. 21715.070X weight: 2.8 kg

DN 100: Art-No. 21715.100X weight: 4.4 kg

consisting of:

drain body with thermal insulation, compression seal**, loose flange with congestion element, Drainlet strainer basket

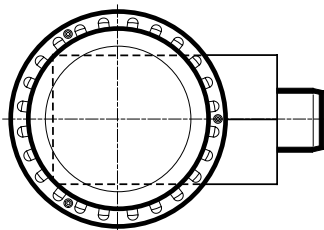
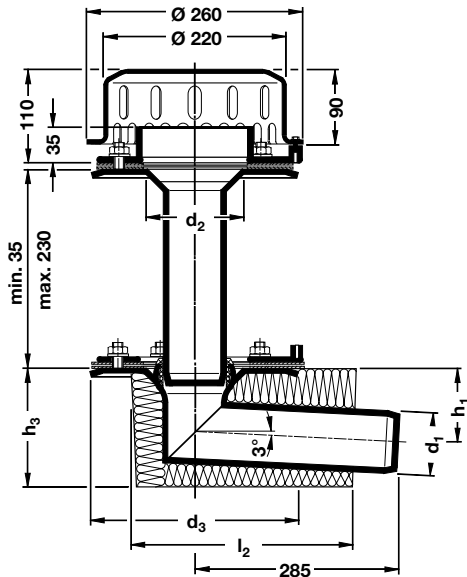
Version c (with thermal insulation and heating)

DN 70: Art-No. 21716.070X weight: 3.3 kg

DN 100: Art-No. 21716.100X weight: 4.9 kg

consisting of:

drain body with thermal insulation and heating, compression seal**, loose flange with congestion element, Drainlet strainer basket



Complete Units, two-piece

Version a (without thermal insulation)

DN 70: Art-No. 21734.070X weight: 4.8 kg

DN 100: Art-No. 21734.100X weight: 7.9 kg

consisting of:

drain body, compression seal**, loose flange with congestion element, Drainlet strainer basket, bottom part, compression seal**, loose flange, sealing element

Version b (with thermal insulation)

DN 70: Art-No. 21735.070X weight: 5.2 kg

DN 100: Art-No. 21735.100X weight: 7.5 kg

consisting of:

drain body, compression seal**, loose flange with congestion element, Drainlet strainer basket, bottom part with thermal insulation, compression seal**, loose flange, sealing element

Version c (with thermal insulation and heating)

DN 70: Art-No. 21736.070X weight: 5.3 kg

DN 100: Art-No. 21736.100X weight: 8.2 kg

consisting of:

drain body, compression seal**, loose flange with congestion element, Drainlet strainer basket, bottom part with thermal insulation and heating, compression seal**, loose flange, sealing element

DN	d ₁	d ₂	d ₃	h ₁	h ₃	l ₂
70	73	125	245	80	137	260
100	102	145	300	103	174	270

* In compliance with test specification according to DIN EN 1253

** Can be omitted when bituminous roofing sheets are used.

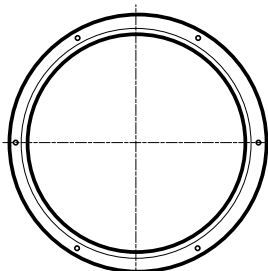
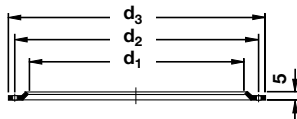
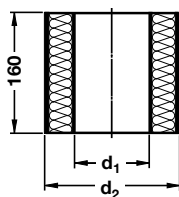
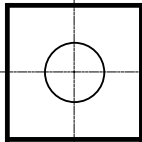
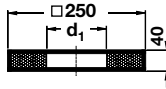
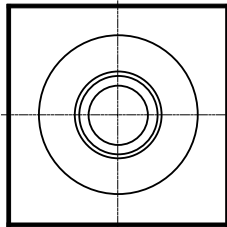
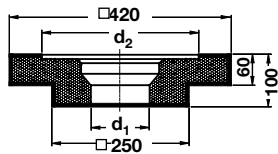
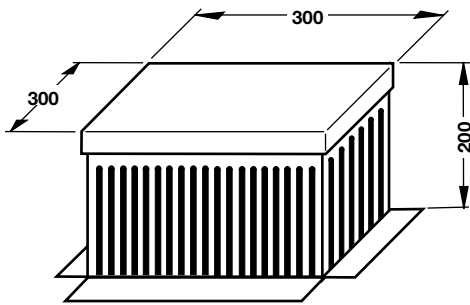
Dimensions and Weights

Accessoires

Inspection shaft for LORO-DRAINLET[®] roof drains

made of aluminium
Art-No. 19973.000X

weight: 3.3 kg



LORO-DRAINLET[®] Thermal insulation

made of foamglas, non-combustible

Art-No.	DN	d ₁	d ₂	kg
19845.070X	70	80	247	0.4
19845.100X	100	112	303	0.6
19845.125X	125	145	333	0.8

LORO-DRAINLET[®] Compensation piece

made of foamglas, non-combustible

Art-No.	DN	d ₁	kg
19844.070X	70	80	0.2
19844.100X	100	112	0.3
19844.125X	125	145	0.4

Thermal insulation, non-combustible

The thermal insulation is factory-fitted to LORO-DRAINLET[®] flat roof drains without thermal insulation (version a).

Art-No.	DN	d ₁	d ₂	kg
19995.070X	70	73	150	0.2
19995.100X	100	102	180	0.3
19995.125X	125	133	220	0.4

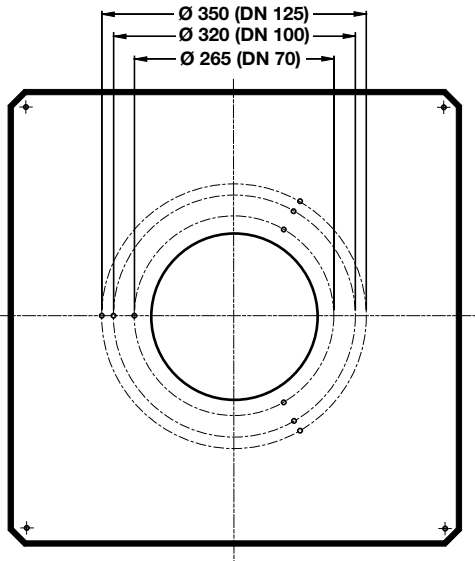
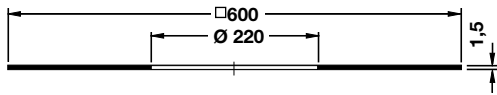
LORO-DRAINLET[®] Fastening flange

made of galvanized steel

Art-No.	DN	d ₁	d ₂	d ₃	kg
21910.070X	70	237	265	285	0.2
21910.100X	100	292	320	340	0.3
21910.125X	125	322	350	370	0.4

Dimensions and Weights

Accessoires

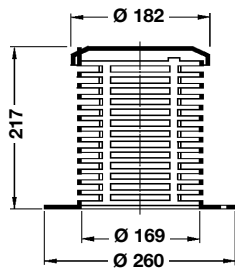


LORO-DRAINLET[®] Reinforcing metal sheet

made of galvanized steel,
including fastening clips and fastening screws
for installation in trapezoidal sheet metal roofs

Art-No. 19975.000X

weight: 3.9 kg



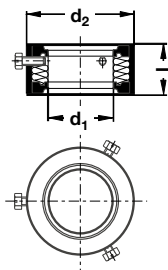
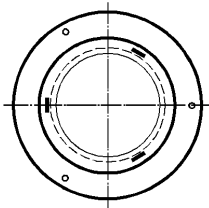
LORO-DRAINLET[®] Strainer unit for inverted roofs

made of stainless steel,
consisting of: strainer basket and strainer cover

Art-No. 19495.000X

weight: 1.4 kg

500 mm version Art.-No. 19496.000X on request.



LORO-DRAINLET[®] Compound insulation piece

made of galvanized steel, with additional inner coating
also for heatable drains

Art.-No.	DN	d ₁	d ₂	l	kg
19974.070X	70	73	102	57	0.2
19974.100X	100	102	133	47	0.3



Heating tape cable for LORO drains

Art-No. 19853.000X

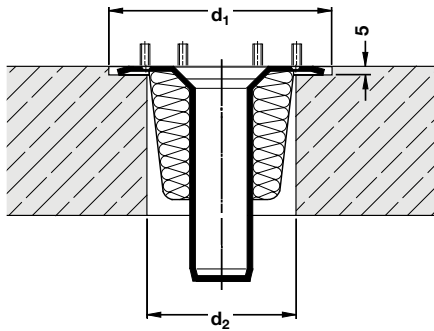
weight: 0.3 kg

Recess Dimensions

**LORO-DRAINLET® Roof drains
DN 50, DN 70, DN 100 and DN 125
for installation in concrete flat roofs**

Tapping hole single-stage

for LORO-DRAINLET® drain body
and LORO-DRAINLET® bottom part



DN	d ₁	d ₂
50	260	122/158*
70	260	122/158*
100	320	142/200*
125	340	172/230*

* Tapping hole for LORO-DRAINLET® bottom part with thermal insulation (two-piece version).

Horizontal runoff

DN	recess depth T		Arecess width B	
	a	b	a	b
70	130	150	140	160
100	170	190	160	200
125	200	210	190	230

DN	recess □ K ₁	
	a	b
70	260	260
100	320	320
125	340	340

a = without thermal insulation
b = with thermal insulation

For backfilling, take a shuttering panel and attach it to the bottom side of the recess. Lift the drain briefly and backfill the empty space. Put the drain back into position.

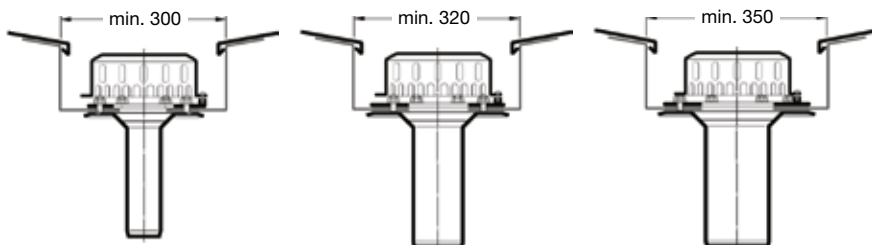
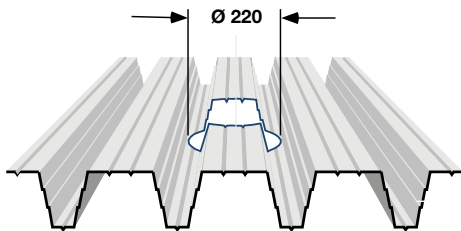
**LORO-DRAINLET® Roof drains
DN 50, DN 70, DN 100 and DN 125
for installation in trapezoidal sheet metal roofs**

- for LORO-DRAINLET® drain body with clamping flange
- for LORO-DRAINLET® bottom part with clamping flange

**LORO-DRAINLET® roof drains,
DN 50, DN 70 und DN 100 and DN 125,
for installation in gutter box**

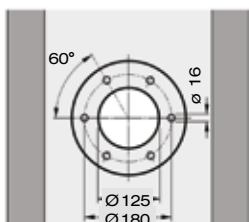
- Prepunch the gutter box in accordance with the hole pattern (ø 16 mm). The loose flange can be used as hole template.

When installing the drain, pay attention that the threaded bolts are positioned centrally in the prepunched holes.

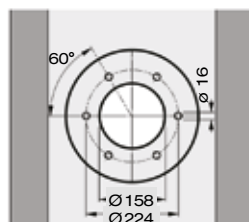


Attention:

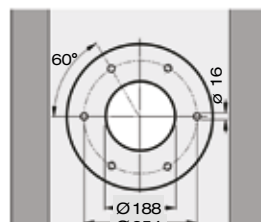
The respective linear expansions of the gutter have to be considered.



DN 50/DN 70

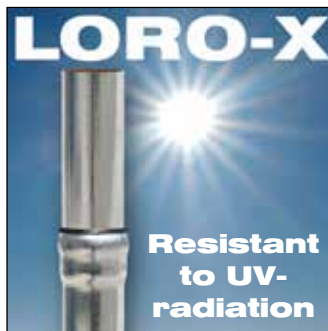
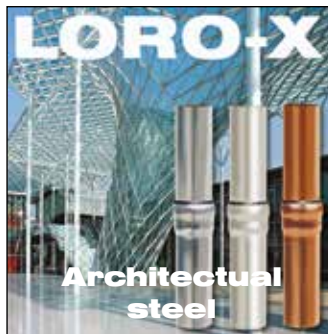
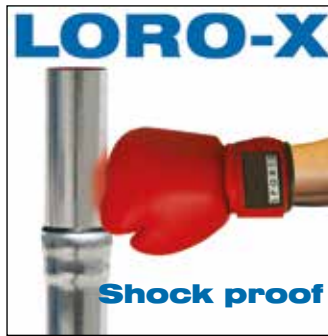


DN 100



DN 125

Advantages of LORO-X pipe systems made of steel with LORO-X push-fit socket



Please contact us for further information or for placing an order:

**LOROWERK
K.H. Vahlbrauk GmbH & Co. KG**

Kriegerweg 1 • 37581 Bad Gandersheim,
Postfach 13 80 • 37577 Bad Gandersheim
Tel. +49 5382 71 0 • Telefax +49 5382 71 203
Internet: www.loro-x.com • e-mail: infocenter@lorowerk.de